



*The Premier Supplier of  
Outdoor Islands Framework / Cabinets / Finished Islands*

PO Box 6960 Concord, N.C. 28027  
Tel: 704-960.4530 Fax: 704-960-4531  
Sheryl@ibdodr.com [www.ibdodr.com](http://www.ibdodr.com)

## Fire Pit Modules

Innovative Backyard Designs (IBD) Outdoor Rooms has developed the most comprehensive fire pit module available in the industry. It is the mission of IBD to build modules to fit the appliances as offered by any manufacturer. IBD offers both stock shapes and sizes, but our true strength is in our custom side and the ability to deliver the product the dealer needs to fill the desire of the consumer. Please accept our thanks for taking the time to view our product line today, please check back often as our web site is continuously updated with new and innovative product for the outdoor living industry.

**AT IBD IT IS JOB #1 FOR OUR SKILLED WORKFORCE**

***“To Turn The Fantasy Of The Consumer Into Reality”***



The above shows the round fire pit, one of the most popular shapes we make. The round fire pit is available in the standard OD of 36 / 42 / 48 / 54 / 60 / 66 / 72 sizes. Our standard fire pit height is 18". However IBD is a customhouse, with the ability to manufacture a fire pit module to your specifications. The cut-out size can be specified to meet your needs.

*Supplier to the trade of quality components and training for Outdoor Room Components  
Recognized as one of the leaders in the OUTDOOR ROOM in the USA!  
DESIGNS / COMPONENTS / TRAINING / FINISHED ISLANDS!  
Made in America by American Craftsmen*



**Above is the Octagon fire pit module, as with the round the standard height is 18" (this to accommodate the electronics controls with many gas units), height can be altered per your request. The Octagon is available in the standard widths of 36 / 42 / 48 / 54 / 60 / 66 / 72. The IBD fire pit can be 8 sided as above, however with our custom capabilities any shape is available, with our creative design and manufacturing staff we can exceed the consumer expectations.**

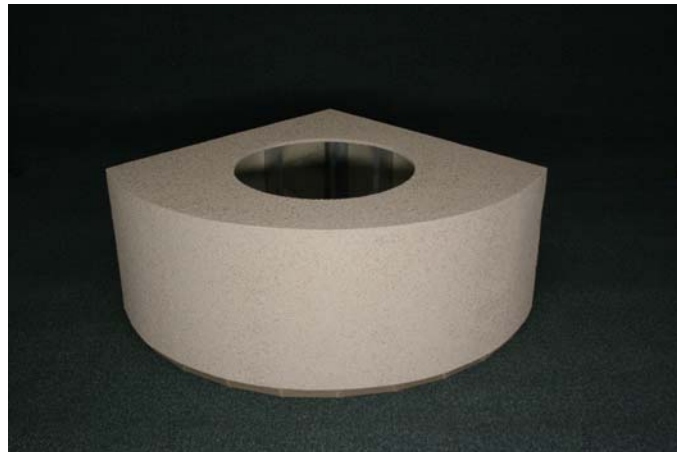


**IBD also makes fire pit modules square, again your choice of either standard sizes or custom application to fit the unique design needs of your valued client.**

*Supplier to the trade of quality components and training for Outdoor Room Components  
Recognized as one of the leaders in the OUTDOOR ROOM in the USA!  
DESIGNS / COMPONENTS / TRAINING / FINISHED ISLANDS!  
Made in America by American Craftsmen*



**Now for more of the designer side of IBD, since the consumers need can often be unique for their outdoor entertaining areas. IBD offers oval fire pits, an excellent choice as a coffee table and has many other decorating destinations. The cut out can be centered or off center, the cut out size determined by your burner selection. Our largest selling sizes is the 34 x 46 giving space for a glass of wine, a bowl of fruit, or whatever the décor choice may be.**



**The Slice shown above, another design by IBD, your choice of sizes, your choice of radius, the design potential for this is enormous. Fit it into a corner, again the location is unlimited. The cut out determined at the time of order.**



**The Stratford offers a graceful curved base with a choice of sizes. Another great design intended as a part of a seating group or to give a more contemporary flair to the outdoor living space.**



**Rectangle, for the person who wants more straight lines in their life, again a multitude of stock sizes and the potential of any sizing needed with our custom capabilities.**



**The Pedestal, this is a unit that fills the need for a bar height, dining height, or occasional height table with a center fire pit. The base can be round, square, octagon, hexagon or any choice.**

*Supplier to the trade of quality components and training for Outdoor Room Components  
Recognized as one of the leaders in the OUTDOOR ROOM in the USA!  
DESIGNS / COMPONENTS / TRAINING / FINISHED ISLANDS!  
Made in America by American Craftsmen*

**THE ABOVE SHOW THE STANDARD CHOICES WHERE IBD  
COMMONLY FILLS ORDERS, BUT THE TRUE STRENGTH OF THE  
IBD FIRE PIT PROGRAM IS THE CUSTOM SIDE, THIS IS WHERE WE  
*“TURN FANTASY INTO REALITY”***



**The Hot Pepper / this designed to fill the design needs of the client, truly a  
work of art.**

**LET IBD KNOW YOUR UNIQUE FIRE PIT NEEDS**

***“WE TURN FANTASY INTO REALITY”***

### **BURNERS AND FUELS**

**IBD manufactures fire pit modules, we do not manufacture or sell burner systems, and we leave this important task up to our great manufacturing partners. There are a lot of great products to choose from in burner systems, ignition systems, logs, glass, and so many other products to fill the fire pit needs of the American consumer. It is the role of IBD to manufacture modules to house the dealer and consumer choice in burner systems with style and function. .**

**The IBD fire pit module is designed as a unit for use with your choice of gas (natural or propane). However, IBD is on the forefront of designs to accept and house the new Bio Fuel fire pit burners now coming to market.**

**These burners using a green renewable fuel, will be a part of the growing fire pit market.**

*Supplier to the trade of quality components and training for Outdoor Room Components  
Recognized as one of the leaders in the OUTDOOR ROOM in the USA!  
DESIGNS / COMPONENTS / TRAINING / FINISHED ISLANDS!  
Made in America by American Craftsmen*

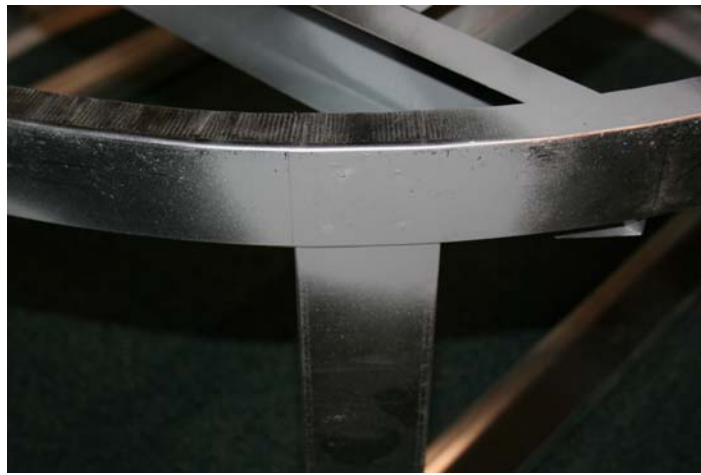
So no matter the fuel or burner choice:  
***“We Turn Fantasy Into Reality”***  
**WHY WE ARE YOUR BEST CHOICE**

There are several reasons for the superiority of the IBD product line and why the IBD fire pit housing should be your choice, we have already shared some of our design choices and sizes, but let's face it, unless the product is built properly, with features to insure a long life, then a good idea is simply that.

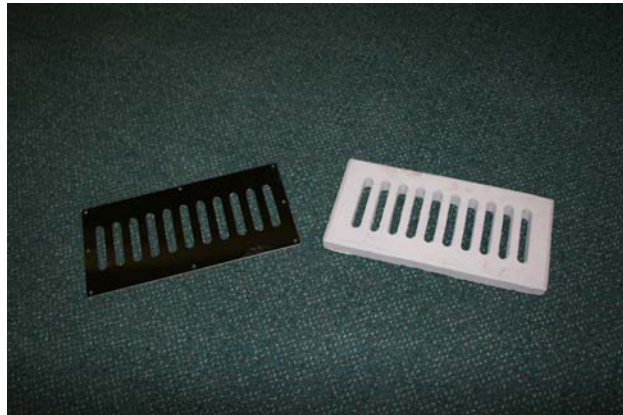
With IBD you have not only the leader in design but also the leader in manufacturing and quality control. Combine all of this with our lifetime warranty on the IBD module and the choice is obvious. But Let's take a look at the construction method used with the IBD module.



The IBD frame, G-90 Galvanized is used as our framing material (the same stuff they build cell phone towers with). As an option we can supply your product with 304 stainless, however the G-90 galvanized offers our lifetime warranty on the frame. Our frames are strong and will hold up to the abuse and the elements.



**IBD does not use screws or rivets to secure the framing material together; we use spot welding with four welds at each joint. This gives you a frame that is super strong and will not rack and distort from the weight of heavy finish materials. The secret then is that we re-galvanize all of the weld joints to insure a long life for the product.**



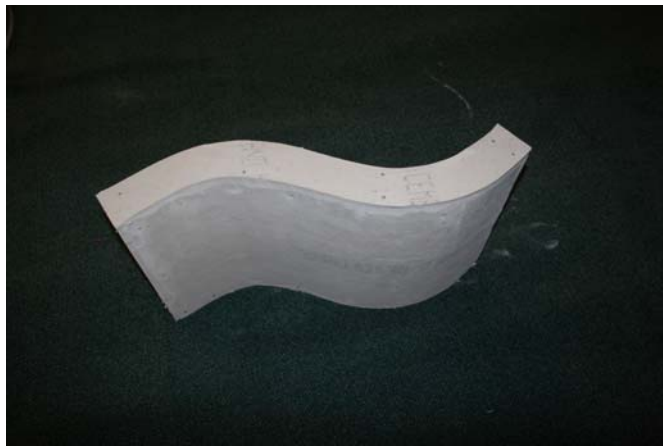
**Ventilation covers in 304-alloy stainless steel are shipped with the fire pit in order to provide the ventilation air to insure that moisture does not attach either the electronic ignition system and also that if there is a gas leak the gas can be released from the module body. The cover on the right is our optional cast stone cover for use with masonry veneer; this can be stained to match the color of the veneer choice.**



**Our choice of sheeting materials is the best; we have selected the Hardiebacker board as manufactured by the James J. Hardie Company as our concrete board of choice. IBD is an authorized user and reseller of product by Hardie. The choice of this is not from price, but rather from its superiority as the top concrete board on the market, and it's ability to function for many years exposed to the elements of outdoor living.**



**Our system goes even further; the Hardieboard sheeting is secured to the framing by means of both ceramic-coated screws and outdoor adhesive. Our joints are set to prevent water entry and all joints are sealed with the outdoor adhesive, we then go one step further and the edges are ground down to insure the best look when the finish material is applied.**



**But the area where the art of the IBD system really comes to light is where we have perfected the method to curve Hardiboard without scoring or otherwise altering the board. Our proprietary system of rolling the board allows us to accommodate the design needs of you client.**



**No one can roll a cone like IBD, again no cuts, no scores, our proprietary method gives your client the look they want and the profit you deserve!**



*Supplier to the trade of quality components and training for Outdoor Room Components  
Recognized as one of the leaders in the OUTDOOR ROOM in the USA!  
DESIGNS / COMPONENTS / TRAINING / FINISHED ISLANDS!  
Made in America by American Craftsmen*

**IBD also offers as an option on all product runners for the bottom of the module, these are not made of treated lumber as commonly offered on inferior product, rather we use a top of the line composite lumber in order to insure our product will stand the test of time in your client's outdoor living area.**

## **FINISHING CHOICES**

**The choice of finishing options is as varied as the color choices for the consumer's home. IBD recognizes this and offers the product in many different formats. Our product has been since conception a Ready To Finish product, shipped to the dealer for the finish and top field installed. This is likely the best profit maker for the dealer and assures the color matches and other specific needs of the consumer. As such our complete line is available as a Ready To Finish product.**



**The above shows RTF fire pits in common shapes in stock and ready to ship. These will be shipped with the standard stainless steel ventilation cover with a protective coating of plastic over these.**

## **HOWEVER / IBD IS MUCH MORE**

**In order to provide the needs of the dealer IBD can also ship to you product finished and ready to install. This can range from different finish methods as are shown following:**



**IBD can ship to you the fire pit with stone veneer applied to the fire pit. It is not a problem for IBD to fill the need, however please keep in mind that positioning of the unit at the job site may be a difficult task, as such the RTF is likely the better choice, but if factory stone veneer is requested, rest assured IBD can fill that need. We can also add optional reinforced forklift access to make moving and installation an easier task.**

**BUT WE NEED A FACTORY FINISHED UNIT WE CAN EASILY MOVE AND INSTALL IN THE OUTDOOR LIVING AREA**

**Once again IBD steps to the front. IBD has developed and is now bringing to market our exclusive Granitech finish. We looked at other finishes on the market, and to be honest they did not meet our needs and were not what we would have at our own home. As such our R&D department went to work to find and develop the best product for this. As such IBD is proud to introduce and can now ship our exclusive Granitech finish in a wide range of colors and two textures.**



**The texture to the left is our Mica Fleck texture and to the right our Stone texture**

*Supplier to the trade of quality components and training for Outdoor Room Components  
Recognized as one of the leaders in the OUTDOOR ROOM in the USA!  
DESIGNS / COMPONENTS / TRAINING / FINISHED ISLANDS!  
Made in America by American Craftsmen*

**Our proprietary coating and sealant can also function AS THE TOP OF THE MODULE this is a radical offering and one that can eliminate the high cost of granite, this also gives you a factory complete module you can offer to your client, take a look at the choices:**



**Our product can be shipped to you as above in the RTF format**



**Or have us ship it to you with the Granitech finish**

*Supplier to the trade of quality components and training for Outdoor Room Components  
Recognized as one of the leaders in the OUTDOOR ROOM in the USA!  
DESIGNS / COMPONENTS / TRAINING / FINISHED ISLANDS!  
Made in America by American Craftsmen*



**Use it with the Ganitech finish as the top material**



**Or locally obtain granite to give a high-class top with class!**

***AND TO BE RELEASED JANUARY 1, 2010***

*Supplier to the trade of quality components and training for Outdoor Room Components  
Recognized as one of the leaders in the OUTDOOR ROOM in the USA!  
DESIGNS / COMPONENTS / TRAINING / FINISHED ISLANDS!  
Made in America by American Craftsmen*



**The IBD fire pit / complete / solid eliminates granite completely**

### **SUMMARY**

**IBD has rapidly risen to the top for the design and product of various modules for the Outdoor Living Market. We are leading the industry in design and innovation. Not only that but our years of retail and installation background give us the unique ability to understand the market from the aspect of the dealer and the installer. We look forward to providing you and your client with quality product!**

***“AT IBD WE TURN FANTASY INTO REALITY”***

***“WHAT CAN IBD BUILD FOR YOU?”***

*Supplier to the trade of quality components and training for Outdoor Room Components  
Recognized as one of the leaders in the OUTDOOR ROOM in the USA!  
DESIGNS / COMPONENTS / TRAINING / FINISHED ISLANDS!  
Made in America by American Craftsmen*